



**AKANT**  
ALUMINUM



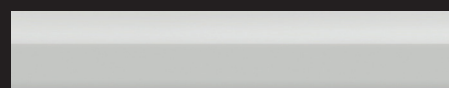
# Aluminium slat

16 mm Standard

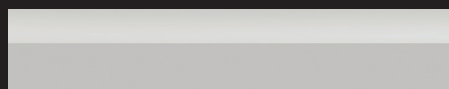
## ZS 16 mm - Standard



900



511



158



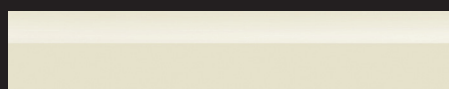
423



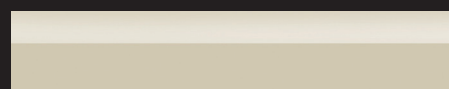
211



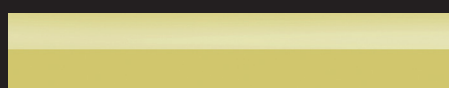
3



2083



2005



1926



115



199

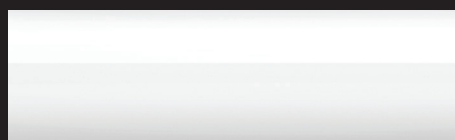


210

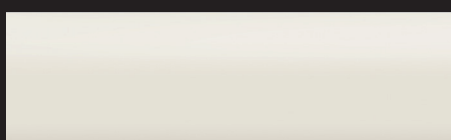
taśma slat	rynna head rail
3	3
115	115
158	511
199	199
210	210
211	211
423	168
511	511
900	900

quality slat

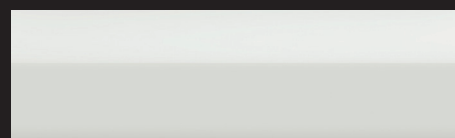
ZS 25 mm - Standard



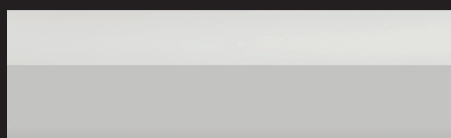
900



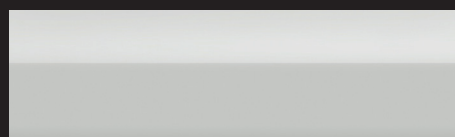
2000



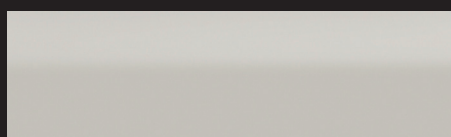
8012



158



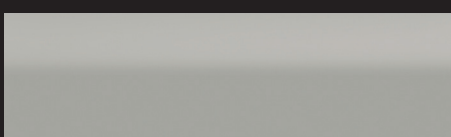
511



7044



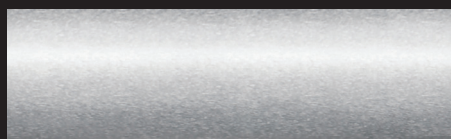
423



7042



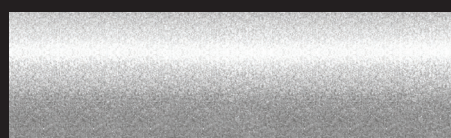
9006



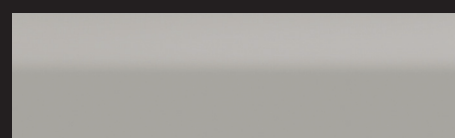
169



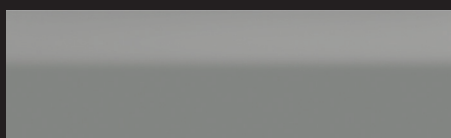
211



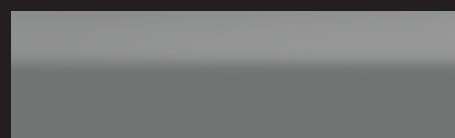
210211



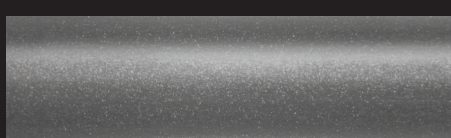
7004



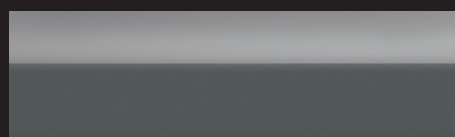
7037



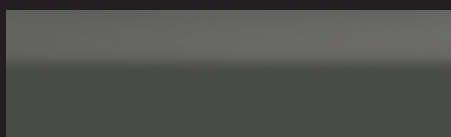
159



9007



281



7043

Aluminum slat  
25 mm Standard

tašma slat	ryčna head rail
158	511
159	159
169	168
211	211
281	281
423	168
511	511
900	900
2000	900
7004	7004
7037	7004
7042	511
7043	281
7044	511
8012	8012
9006	168
9007	168
210211	210 / 211

quality slat

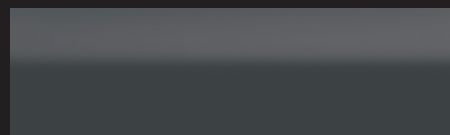
# Aluminum Slat

25 mm Standard

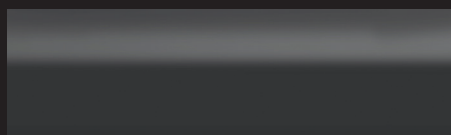
## ZS 25 mm - Standard



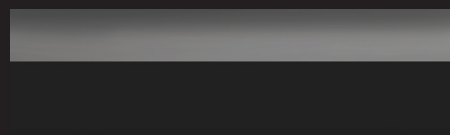
996



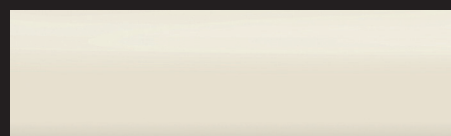
7016



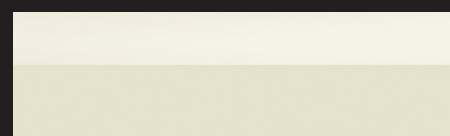
164



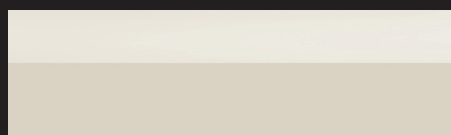
165



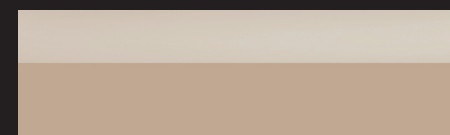
538



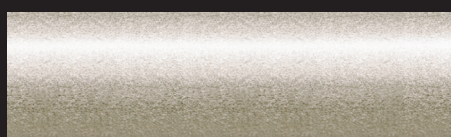
2083



2005



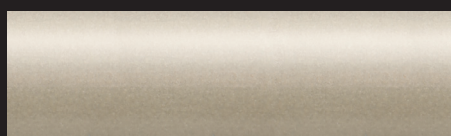
3



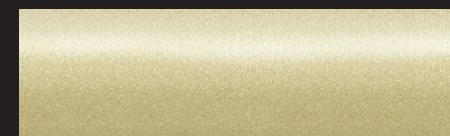
99712



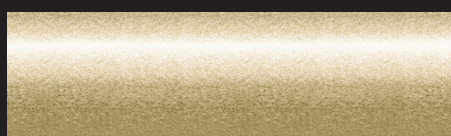
2082



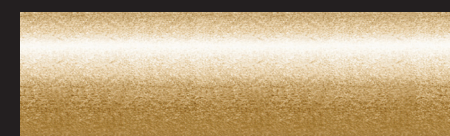
3082



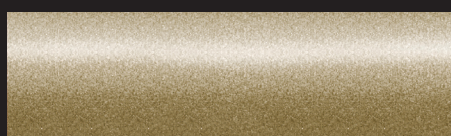
99192



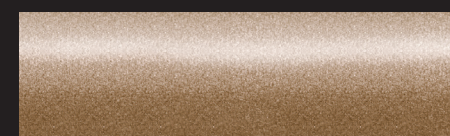
199



99302



210



212



99492



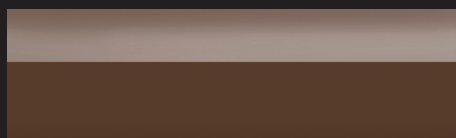
117

taśma slat	rynną head rail
3	3
117	117
164	164
165	165
199	199
210	210
212	212
538	538
996	996
2005	2005
2082	199
2083	2083
3082	199
7016	281
99192	99192
99302	199
99492	117
99712	199

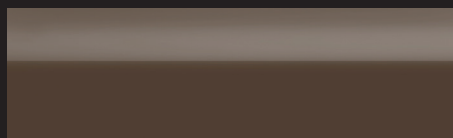
quality slat



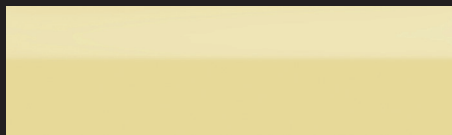
ZS 25 mm - Standard



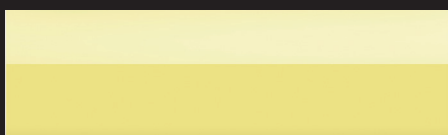
2017



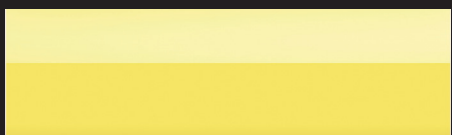
115



541



1926



518



43



137



182



179



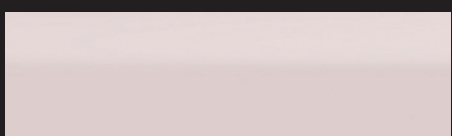
2016



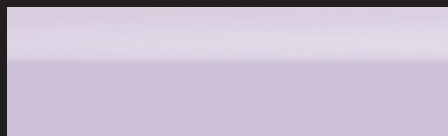
186



475



3338



3335



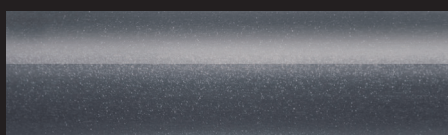
490



187



491



760

Aluminium slat  
25 mm Standard

taśma slat	rynna head rail
43	43
115	115
137	3189
179	179
182	182
186	186
187	187
475	475
490	490
491	491
518	518
541	541
760	760
1926	1926
2016	179
2017	117
3335	3335
3338	3338

quality slat

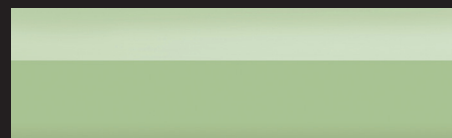
# Aluminium slat

25 mm Standard  
25 mm Wood effect

## ZS 25 mm - Standard



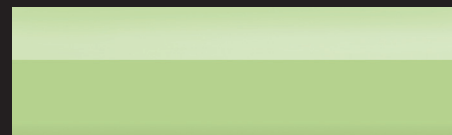
6603



509



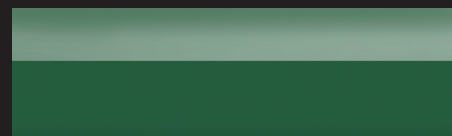
2007



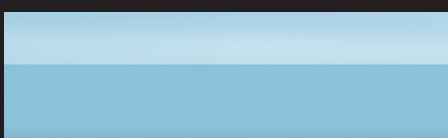
937



705



3550



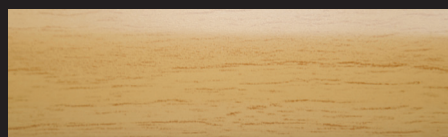
172



517

taśma slat	ryna head rail
172	172
509	509
517	517
705	705
937	509
2007	2007
3550	3550
6603	6603

## ZS 25 mm - Drewnopodobne / Wood effect



772093



6042003



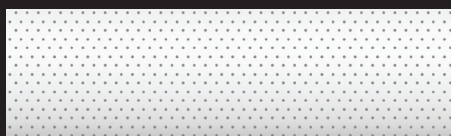
772098

taśma slat	ryna head rail
772093	772093
772098	772098
6042003	6042003

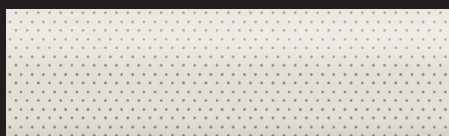
quality slat



ZS 25 mm - Perforowane / Perforated



150P



4459P



104168P



1858P

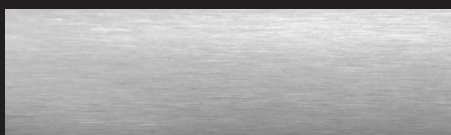
ZS 25 mm - Strukturalne / Struktury



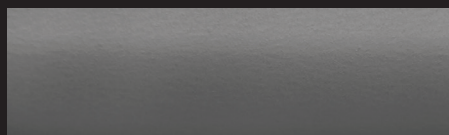
7326



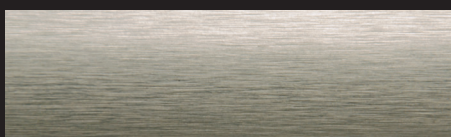
9770



7328



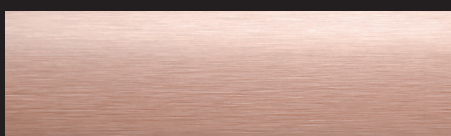
1510



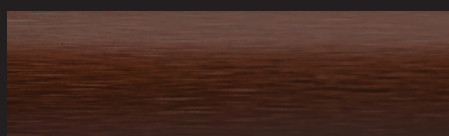
7382



7381



7332



7380

Aluminium slat  
25 mm Perforated  
25 mm Structure

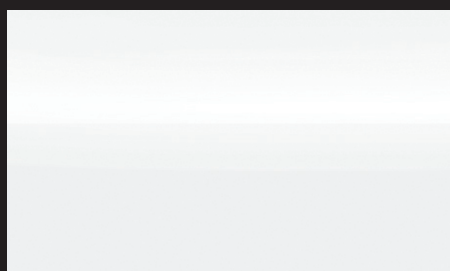
taśma slat	rywna head rail
1510	281
7326	900
7328	168
7332	182
7380	117
7381	99192
7382	522
9770	900

quality slat

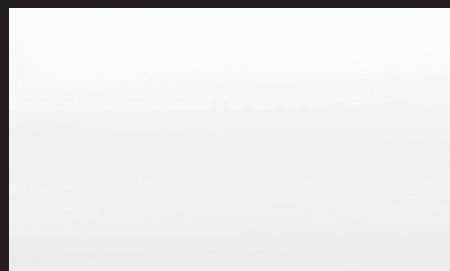
# Aluminum slat

50 mm Standard  
50 mm Matt

## ZS 50 mm - Standard



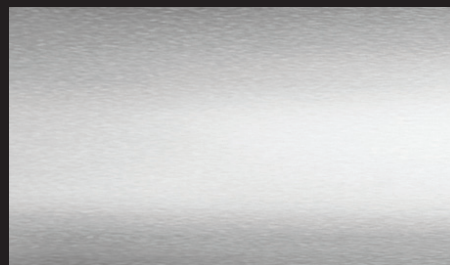
50100



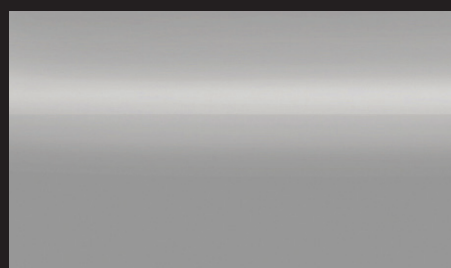
50100MAT



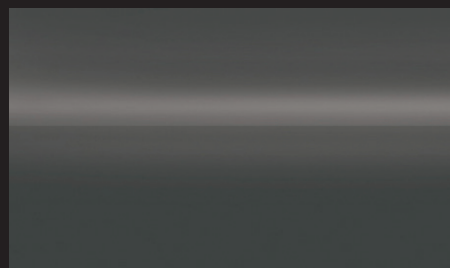
50120



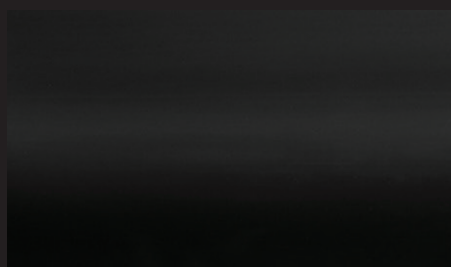
50130



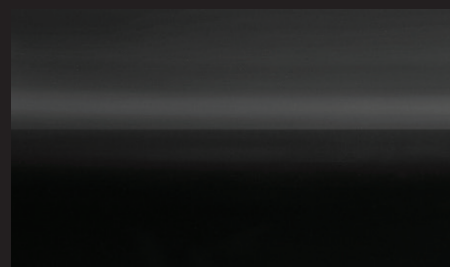
50320



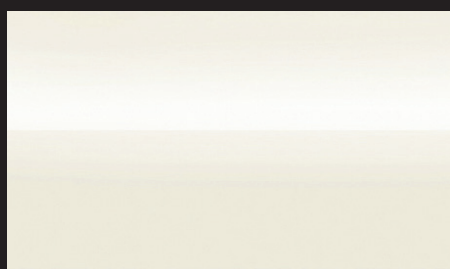
50300



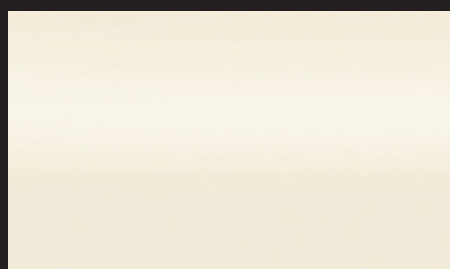
50220MAT



50220



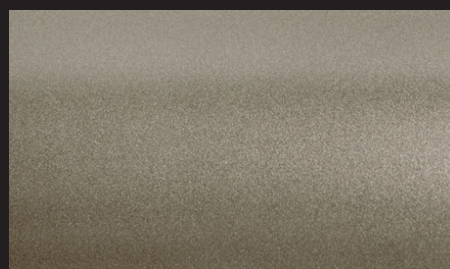
50110



50310



50140



50190

taśma slat	rynną head rail
50100	281 white
50110	110 ivory
50120	825 silver
50130	130 steel
50140	140 oyster
50190	190 stone
50220	220 night
50300	5011 anthracite
50310	5002 ivory
50320	5009 grey
50100MAT	281 white
50220MAT	531 black

quality slat



## ZS 50 mm - Standard



50150



50160



50170



50180



50200



50210

## ZS 50 mm - Wood effect



5093



5085



5095

# Aluminium slat

50 mm Standard  
50 mm Wood effect

taśma slat	rynna head rail
50150	150 champagne
50160	160 copper
50170	170 taupe
50180	180 ginger
50200	200 shadow
50210	210 java

taśma slat	rynna head rail
5093	728 dąb
5085	728 dąb
5095	728 dąb

quality slat



ZS 50 mm - Perforowane / Perforated

Aluminium slat  
50 mm Perforated



50100P



50110P



50120P



50140P



50150P



50160P



50170P



50210P



50200P



50220P

taśma slat	ryna head rail
50100P	281 white
50110P	110 ivory
50120P	825 silver
50140P	140 oyster
50150P	150 champagne
50160P	160 copper
50170P	170 taupe
50200P	200 shadow
50210P	210 java
50220P	220 night

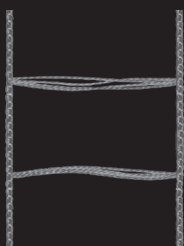
quality slat



Drabinka sznurkowa 50 mm ZDR50-002-x- Ladder cord



ZDR50-002-W



ZDR50-002-GY



ZDR50-002-BK



ZDR50-002-IV



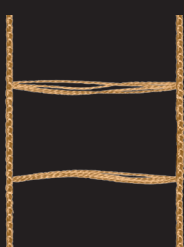
ZDR50-002-B



ZDR50-002-AL



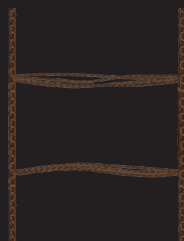
ZDR50-002-DB



ZDR50-002-MC



ZDR50-002-CC



ZDR50-002-WN



ZDR50-002-CD

Ladder cord  
 ZS 50 mm Standard  
 ZS 50 mm wood effect  
 ZS 50 mm Perforated

kolor color	kod code
white	ZDR25-002-W
grey	ZDR25-002-GY
black	ZDR25-002-BK
ivory	ZDR25-002-IV
alabaster	ZDR25-002-AL
beige	ZDR25-002-B
dark beige	ZDR25-002-DB
mocca	ZDR25-002-MC
cacao	ZDR25-002-CC
walnut	ZDR25-002-WN
cordovan	ZDR25-002-CD

quality slat

# Monokomando 25

## CORD TASE

COLORS

### Końcówka sznurka stalowa - Modern steel cord tassel



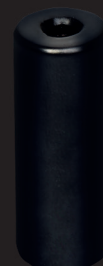
Z50-100-4-9016



Z50-100-4-7044



Z50-100-4



50-100CZ-4

kolor color	kod code
steel	Z50-100-4
white	Z50-100-4-9016
grey	Z50-100-4-7044
black	Z50-100CZ-4

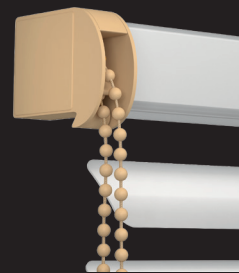
### Monokomando 25 mm



Z25068 - left  
Z25-069 - right



Z25068IV - left  
Z25-069IV - right



Z25068IBEZ- left  
Z25-069BEZ- right

kolor color	left kod code	right kod code
white	Z25068	Z25069
ivory	Z25068	Z25069
beige	Z25068	Z25069
grey	Z25068	Z25069
czarny	Z25068	Z25069
brąz	Z25068	Z25069



Z25068S - left  
Z25-069S - right



Z25068C - left  
Z25-069IV - right



Z25068IB- left  
Z25-069B- right

quality slat